

Overview

QuOST can save the engineer time and money by automating the processes of taking off, billing and pricing a job. In doing so, it will provide a rapid method for comparing the cost implications of various design options, materials and installation conditions. For instance, a full cost comparison between using PVC, clay or concrete pipes can be completed in minutes.

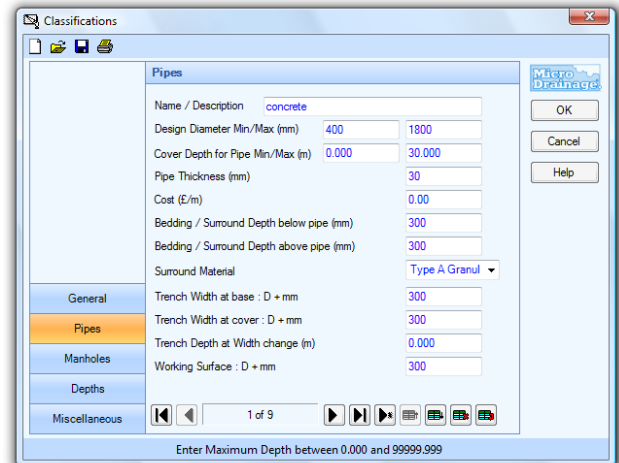
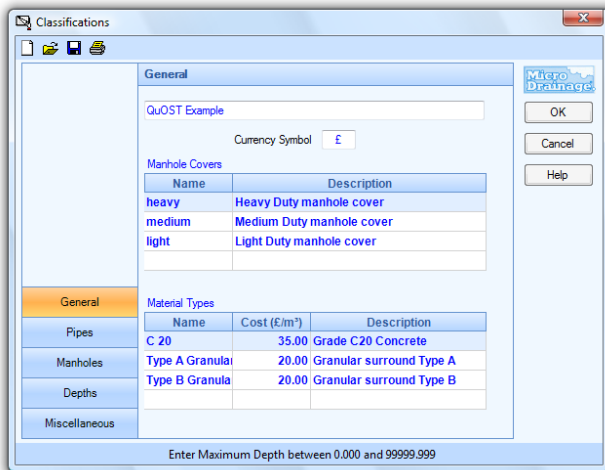
Description

Taking Off

- ⊕ QuOST takes design data already generated by the System 1 or DrawNet modules
- ⊕ All materials, pipe specifications, manhole types etc. are user definable, so the program may be used anywhere in the world
- ⊕ Three manhole classification and manhole cover type files are supplied as standard
- ⊕ As the WinDes modules link to a very wide range of civil engineering software, QuOST can integrate with these and become part of any design process
- ⊕ Multiple intermediate ground levels are supported either to construction level or existing levels
- ⊕ Excavation volumes for manholes and pipe runs are fully automated
- ⊕ Replacement volumes take account of heave
- ⊕ Standard trench and battered excavations are fully supported

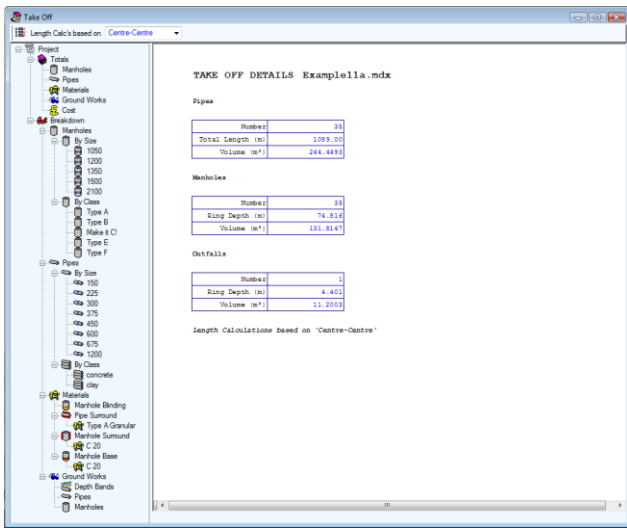


- ⊕ A library of construction costs may be maintained to enable the engineer to conduct cost benefit analysis on alternative proposals
- ⊕ QuOST uses parameters defined by the user to classify each pipe and manhole in the system automatically
- ⊕ QuOST will calculate the excavation volumes for different construction methods and techniques
- ⊕ Classifications are saved and may be used on any projects



Schedules and Results

- ⊗ QuOST benefits anyone involved in the design and construction process
- ⊗ The data may be presented in a variety of formats to assist the designer, the quantity surveyor or the contractor
- ⊗ Summaries of all quantities and manhole types are scheduled in clear and well presented formats ideal for billing
- ⊗ Summations of true construction lengths assist the task of ordering materials



With Other Modules

QuOST is run on data that is defined in System 1 or DrawNet.

Additional Features in WinDes W.12.6

Checking crossings and conflicts has been improved to include detection of horizontal regions within set tolerances.

The Easi-Base Manhole from FPMcCann can now be automatically scheduled.

Speed increases will help larger models, most notably with Plan, 3D WorldView and large spreadsheets.

Printing and graphs have improved speed and reliability.

Support Material

WinDes is supplied with a hard-copy manual which includes worked examples. All the modules benefit from extensive online help including 'How Do I' tutorials for frequently asked questions.

All Micro Drainage software is backed up by a comprehensive support and maintenance program.

Contact Details

For further information about WinDes, training and workshops, visit www.microdrainage.co.uk, email info@microdrainage.co.uk or call +44 (0)1635 582555.

If you have been struggling to keep abreast of the latest guidance, rules and regulations visit the Micro Drainage Blog at <http://pipedup.wordpress.com>



WinDes W.12.6, keeping you up to date and industry compliant.workshops, visit www.microdrainage.co.uk, email info@microdrainage.co.uk or call +44 (0)1635 582555.