

MICRO DRAINAGE LAUNCHES NEW WinDes SUITE

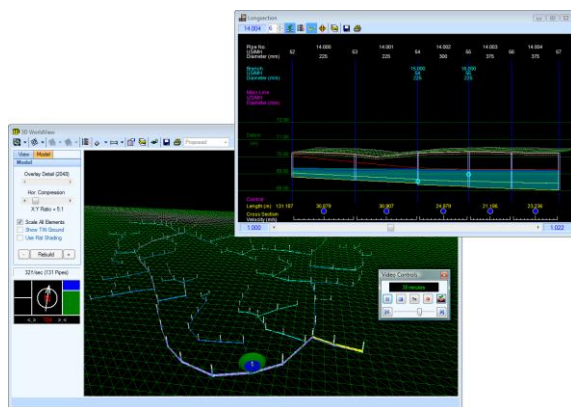
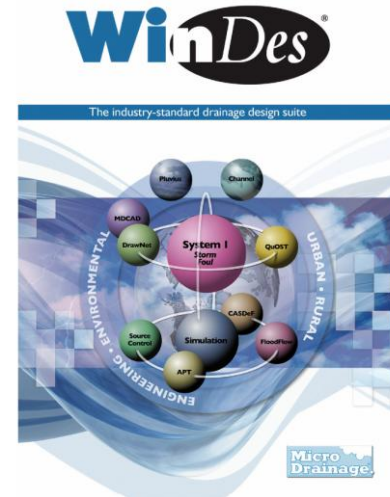
WinDes W.12 is launched with seamless module integration, the latest regulatory compliance and utilising the most recent technology platforms.

UK-based drainage software developer Micro Drainage has announced a major upgrade of its WinDes sustainable drainage design, analysis and modelling suite.

WinDes was conceived from the outset as a suite of tools designed by engineers, for engineers, and this remains the defining characteristic of the Micro Drainage approach.

Always, the emphasis is on getting the job done efficiently, to the highest professional standards.

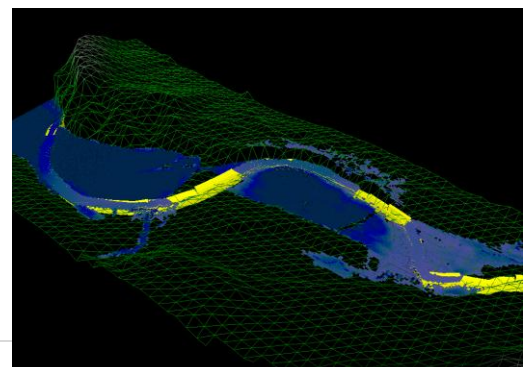
WinDes W.12 is said to be the most significant redevelopment of the suite since its conversion from DOS into Windows format in 1995 and progresses the industry standard sustainable drainage design software to a 64-bit compatible computing platform.



Productivity, seamless integration, sustainability and compliance have been the driving forces behind the upgrade. The 64-bit environment allows for a complete integration of the modules within the suite, accelerating the processes of design and analysis. New capabilities have also been introduced that take account of the latest governmental directives on flooding and water management,

including Sustainable Urban Drainage Systems (SUDS), flood flow path modelling and the use of green roofs.

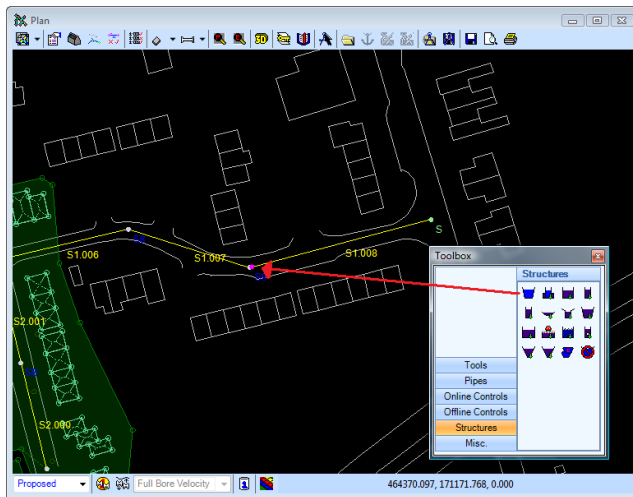
Peter Coombs, Marketing Manager for Micro Drainage, points out that the workflow within WinDes W.12 allows engineers to follow the principles of Quantity, Quality and Amenity that shape the systematic approach to



sustainable drainage design. "We have worked closely with regulatory bodies and approving authorities, as well as with our customers, to build a suite that equips engineers to confront the challenges of legislation, climate change, sustainability and combined urban and rural drainage," he says.

Modular architecture

The modular architecture of the WinDes suite provides engineers with a diverse toolset of specialist applications. Whilst they have always been designed to work together, the limitations of the 32-bit computing platform meant that the modules had to be opened separately, and data loaded and reloaded between them. One of the most frequent requests from end users was for seamless integration between modules such as System 1 and Simulation.

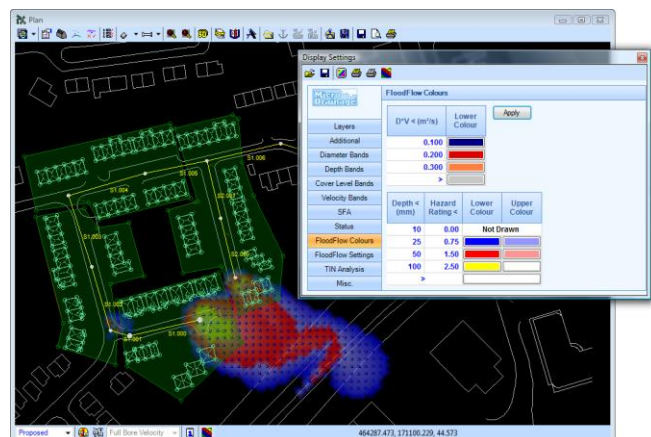


WinDes W.12 allows the complete automation of every stage of the process. Modules can now run simultaneously, so that data edited in one module is automatically changed in all other running modules, with any recalculation running in the background. Users can see immediately how changes made in the network design affect the results in the analysis and modelling modules.

Raw speed is another key benefit of the new platform. Everything runs faster and the software can take full advantage of the multiple core processing capabilities of today's PCs. This translates into higher productivity and more capacity for engineers under pressure to meet demanding deadlines.

Compliance through design

The continually evolving regulatory regime is also designed into the WinDes workflow. The capabilities of modules such as Source Control (which incorporates design for SUDS), FloodFlow and the Advanced Productivity Tools, allow designs to be tested against all leading regulatory requirements.



These include both Sewers and SUDS For Adoption, the Code For Sustainable Homes, PPS25, the European Water Framework Directive, the latest round of Building Regulations and the requirements for Surface Water Management Plans. Pending legislation, such as the Flood and Water Management Bill, is also already accommodated within the capabilities of the suite.

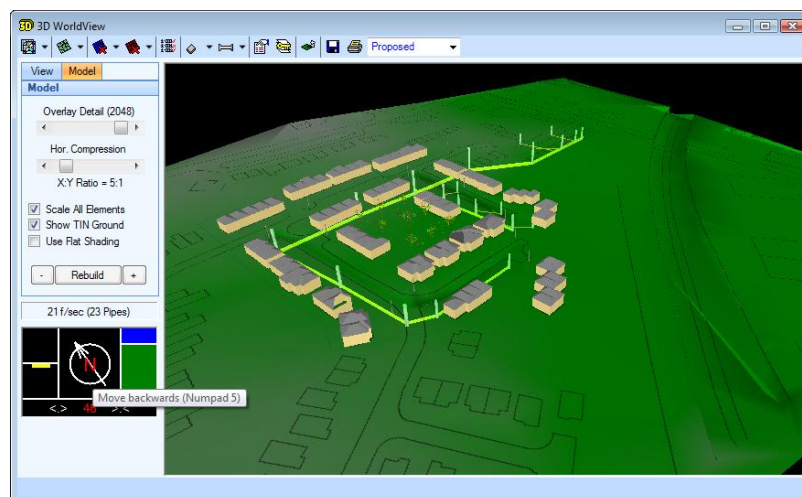
Green roofs can be designed, analysed and modelled as part of a complete SUDS treatment train that can be produced in the software.

Micro Drainage is working with the Environment Agency in the development and application of this technology. With green roofs now a requirement for all major new developments in London, the ability to work with them within WinDes is a valuable new resource for engineers.

Familiar interface

Peter Coombs points out that existing users will not have to follow a lengthy learning curve to work with the new software.

“We have made many improvements, but the familiar essentials of the interface are still there,” he says. “We have added the new capabilities as options, which users can turn on or off. This allows them to continue to use their accustomed workflow, adding in the new capabilities as and when they are ready for them.”



Users who choose to adopt the new functions within the software immediately will have a very short learning curve and Micro Drainage offers a complete portfolio of training courses that will help a user gain maximum productive value from every module.

Maintained Micro Drainage customers, will receive WinDes W.12 as a free upgrade. This provides access to technical support that encompasses software and engineering issues, helping users to get the best from the software as they work with it.

Micro Drainage proactively encourages feedback from their customers and invited ideas for inclusion in WinDes W.12. The customer requests for additions and improvements implemented into the software exceeded the targets defined by the quality control standards the company set for themselves and for TickIT certification.

For further detailed information please contact Micro Drainage on 01635 582555 or visit www.microdrainage.co.uk or www.windesw12.co.uk

Further information:

Peter Coombs, Micro Drainage, 01635 582555 peter.coombs@microdrainage.co.uk
www.microdrainage.co.uk

Notes for editors

Micro Drainage was founded in Newbury in 1983 and developed the first drainage design suite for the PC. WinDes is now the industry-standard drainage design suite in the UK, with over 10,000 Micro Drainage software modules currently in use. The suite is used by over 90 percent of the UK's top sewerage consultants, as defined by the New Civil Engineer Consultants File, and all water utility companies.

All Micro Drainage products are backed by comprehensive technical support and training programmes, including engineering consultancy focusing on the application of the software. Micro Drainage is the only drainage engineering software developer certified to EN BS ISO 9000 and TickIT standards.